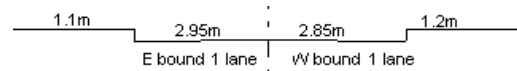
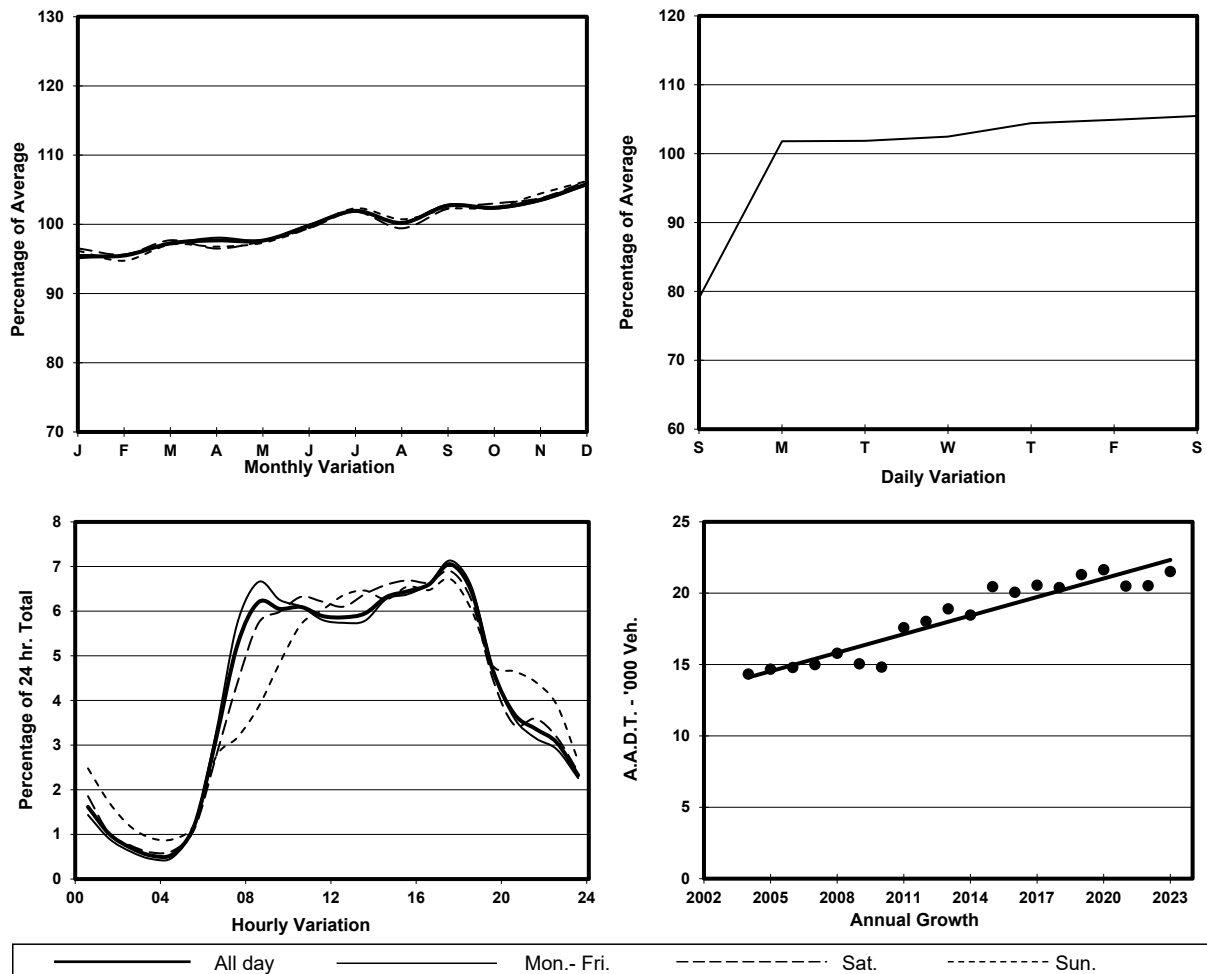


YEAR 2023  
 COVERAGE (B) STATION 6207  
 ROAD NETWORK MAJOR  
 ROAD TYPE RURAL ROAD

LINK KAM TIN RD (from KAM SHEUNG RD WESTERN JUNCTION to FAN KAM RD)



## 1. TRAFFIC FLOW VARIATION AND GROWTH



## 2. TRAFFIC CHARACTERISTICS (BY DIRECTION)

Parameter	All - Day	Mon. - Fri.	Sat.	Sun.
<b>EAST BOUND</b>				
A.A.D.T.	10370	10820	11170	8180
R 12 / 24 - %	72.8	73.9	72.2	66.4
R 16 / 24 - %	89.7	90.3	89.3	86.1
AM Peak Hour	0800-0900	0800-0900	0900-1000	0900-1000
One-way flow at AM peak hour	660	750	700	350
T - % (AM)	-	10.1	-	-
PM Peak Hour	1700-1800	1700-1800	1600-1700	1600-1700
One-way flow at PM peak hour	690	740	710	550
T - % (PM)	-	5.5	-	-
Prop.of commercial vehicles - 16 hr.	-	7.2	-	-
<b>WEST BOUND</b>				
A.A.D.T.	11140	11600	11770	9130
R 12 / 24 - %	75.4	76	76.1	70.3
R 16 / 24 - %	88.2	88.5	88.4	86.3
AM Peak Hour	0800-0900	0800-0900	0800-0900	0900-1000
One-way flow at AM peak hour	680	740	710	490
T - % (AM)	-	8.2	-	-
PM Peak Hour	1700-1800	1700-1800	1700-1800	1700-1800
One-way flow at PM peak hour	830	860	870	660
T - % (PM)	-	1.3	-	-
Prop.of commercial vehicles - 16 hr.	-	7.1	-	-

## 3. OTHER INFORMATION AND COMMENT

**4. Vehicle classification and occupancy - Monday to Friday**

Time		Class of vehicle									
		Motor Cycle	Private Car	Taxi	Private LB	PLB	Goods veh.		Non Fr. Bus	Fr. Bus	
							Light	M & H		SD	DD
0700-0800	Pro	5.7	49.1	6.4	2.1	6.1	19.9	8.2	0.4	0.0	2.1
	Ocp	1.1	1.5	1.9	7.7	14.1	1.4	1.8	30.0	0.0	44.8
0800-0900	Pro	1.6	57.1	9.7	2.1	4.2	16.1	7.9	0.3	0.0	1.0
	Ocp	1.0	1.3	2.2	5.9	13.9	1.5	1.0	24.0	0.0	41.5
0900-1000	Pro	2.0	57.3	7.6	0.3	4.5	19.9	7.3	0.0	0.0	1.2
	Ocp	1.0	1.3	1.6	2.0	10.6	1.6	1.2	0.0	0.0	17.9
1000-1100	Pro	0.9	57.9	6.2	0.6	4.5	19.3	8.9	0.6	0.0	1.1
	Ocp	1.0	1.4	2.0	1.5	6.6	1.3	1.4	3.0	0.0	17.6
1100-1200	Pro	3.6	52.3	5.2	1.0	4.2	23.7	8.1	0.7	0.0	1.2
	Ocp	1.0	1.3	2.2	1.7	10.8	1.5	1.3	33.5	0.0	21.1
1200-1300	Pro	1.5	59.6	5.9	1.8	2.9	22.3	4.8	0.0	0.0	1.3
	Ocp	1.3	1.4	1.8	3.8	12.1	1.4	1.2	0.0	0.0	18.4
1300-1400	Pro	2.2	55.7	7.3	0.0	2.2	22.8	8.2	0.3	0.0	1.2
	Ocp	1.0	1.4	1.8	0.0	11.1	1.5	1.3	44.0	0.0	18.4
1400-1500	Pro	3.4	56.5	3.4	0.3	1.4	25.8	8.1	0.0	0.0	1.2
	Ocp	1.1	1.4	1.6	1.0	12.2	1.3	1.1	0.0	0.0	17.4
1500-1600	Pro	3.4	56.1	6.2	0.5	1.6	24.8	6.5	0.0	0.0	0.9
	Ocp	1.0	1.4	2.0	7.0	9.8	1.4	1.2	0.0	0.0	23.1
1600-1700	Pro	1.1	57.6	5.7	2.8	2.0	23.8	5.4	0.6	0.0	1.0
	Ocp	1.0	1.3	1.8	5.3	16.3	1.5	1.2	15.0	0.0	25.9
1700-1800 Peak hour	Pro	4.0	59.7	8.2	1.6	3.5	19.9	2.1	0.0	0.0	1.0
	Ocp	1.1	1.4	1.7	2.2	14.8	1.5	1.0	0.0	0.0	43.7
1800-1900	Pro	4.5	69.0	5.7	0.5	4.2	10.4	4.2	0.2	0.0	1.2
	Ocp	1.1	1.4	1.8	1.5	15.6	1.5	1.0	1.0	0.0	43.3
1900-2000	Pro	2.8	69.5	11.4	0.0	4.0	10.2	0.9	0.0	0.0	1.2
	Ocp	1.2	1.4	1.7	0.0	14.0	1.5	1.0	0.0	0.0	35.6
2000-2100	Pro	2.8	69.9	10.8	0.0	5.2	8.4	0.5	0.5	0.0	2.0
	Ocp	1.0	1.4	1.7	0.0	10.0	1.1	1.0	1.0	0.0	19.6
2100-2200	Pro	10.3	57.0	14.9	1.0	3.1	9.8	2.1	0.0	0.0	1.9
	Ocp	1.2	1.4	1.9	2.5	11.0	1.3	2.3	0.0	0.0	15.2
2200-2300	Pro	3.7	62.9	19.7	0.6	3.1	6.8	1.2	0.0	0.0	2.0
	Ocp	1.0	1.3	1.8	3.0	8.6	1.2	1.5	0.0	0.0	17.0
16 hours	Pro	3.1	59.1	7.7	1.0	3.5	18.5	5.6	0.2	0.0	1.3
	Ocp	1.1	1.4	1.8	4.4	12.2	1.4	1.3	18.5	0.0	27.2

**Legend: Pro.** Proportion of vehicles in % (Sum may not add up to 100% due to figure rounding)\*

**Ocp.** Average occupancy of vehicles including both driver and passengers\*

**M&H** Medium and Heavy

\* All traffic data are collected from combined bounds